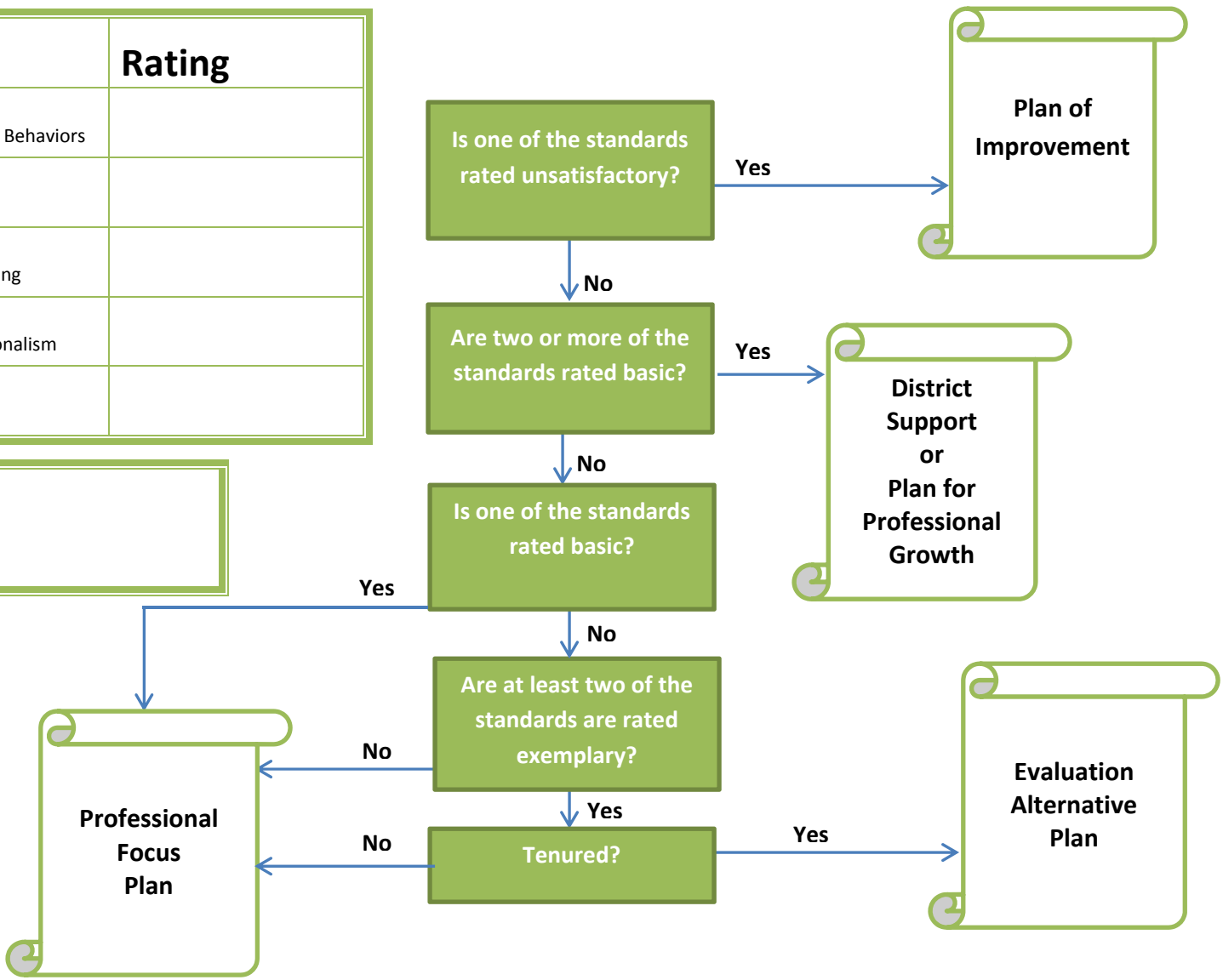


Level of Support for Teachers

Directions: Use the Domain & the Student Learning Standard ratings to determine the Level of Support

Domain	Rating
One: Classroom Strategies & Behaviors	
Two: Planning & Preparing	
Three: Reflecting on Teaching	
Four: Collegiality & Professionalism	
Five: Student Learning	

Level of Support	
-------------------------	--



Overall Rating Activity

Educator: _____

Step 1: List the rating and points (see below).

Key	
Rating	Points
Exemplary	4
Proficient	3
Basic	2
Unsatisfactory	1

Professional Performance Domains	Rating	Points
One: Classroom Strategies & Behaviors		
Two: Planning & Preparing		
Three: Reflecting on Teaching		
Four: Collegiality & Professionalism		
Total		
% of total points possible for Domain One to Four		Total/16

Step 2: Figure the % of total points possible.

Student Learning Domain	Rating	Points
Five: Student Growth		
% of total points possible for Domain Five		Points/4

Steps 3-6: Complete the chart below.

School Year	Column A % of total points possible for Professional Performance (Domain 1-4)	Column B Total Points Possible for Domain 1-4	Column C A X B = Points for Professional Performance (Domain 1-4)	Column D % of total possible points for Student Growth (Domain 5)	Column E Total Points Possible for Domain 5	Column F D x E = Points for Student Growth	Column G C + F = Overall Points Total	Overall Rating
2015-2016 & 2016-2017		80			20			
2017-2018		65			35			
2018-2019 & later		50			50			